

Draadloos Netwerk UA

Universiteit Antwerpen

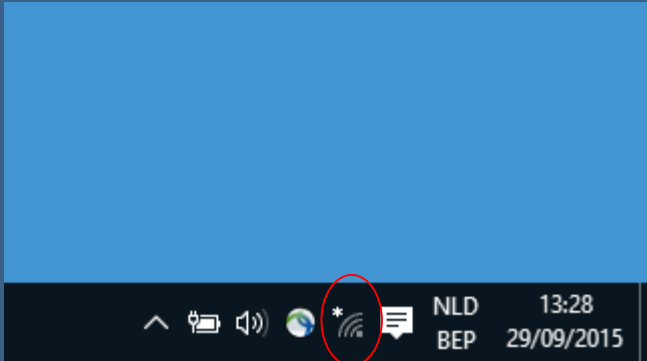


Verbinden met Eduroam/UAntwerpen

- SSID : eduroam of UAntwerpen
- Network Authentication : WPA2
- Data Encryption : AES
- Authentication Type : PEAP
- Authentication Protocol : MS-CHAP-V2
- User Name : UA-gebruikersnaam@ad.ua.ac.be
- Password : UA-wachtwoord
- Roaming Identity(indien gevraagd in de client) : UA-gebruikersnaam@ad.ua.ac.be
- Authentication servers : UAradius*.uantwerpen.be (* = 1 t/m 6)
- Trusted Root Certification Authorities: AddTrust External CA Root

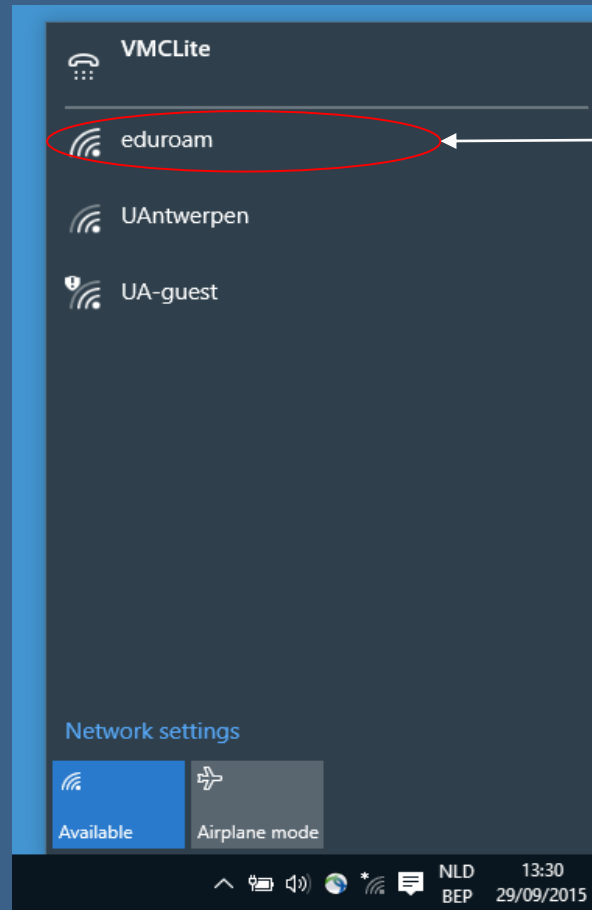
Windows 10





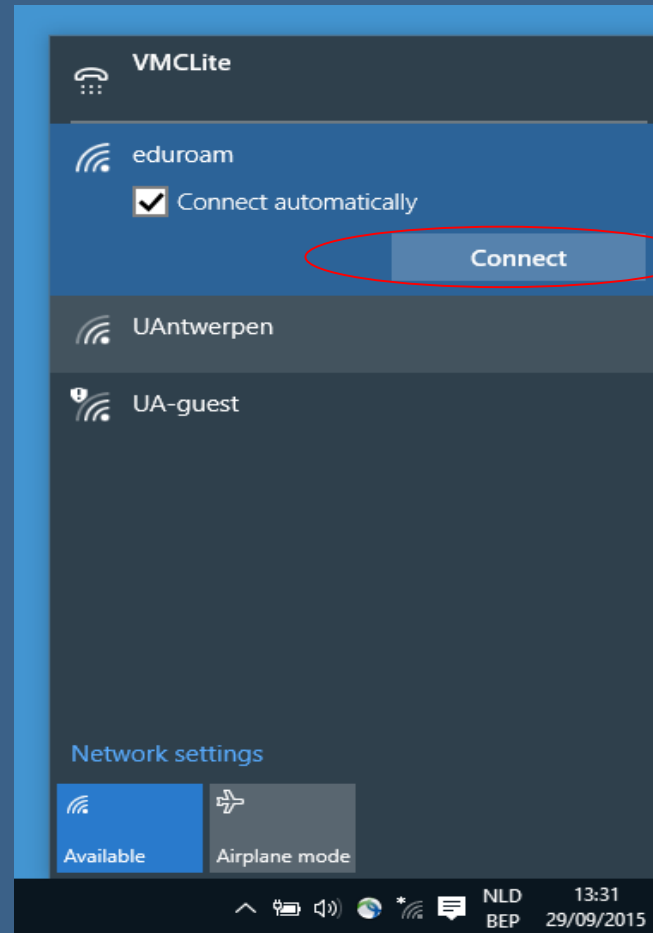
Left Click



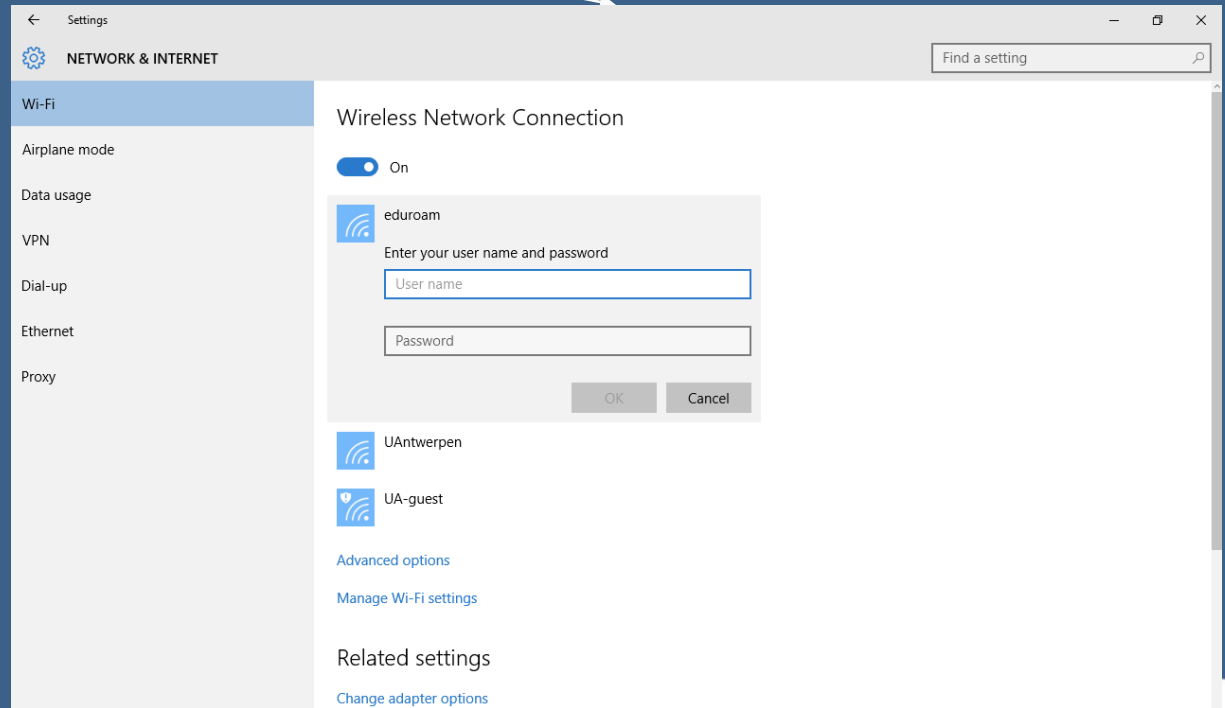
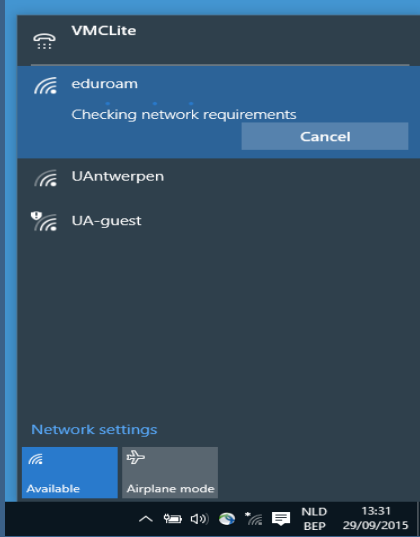


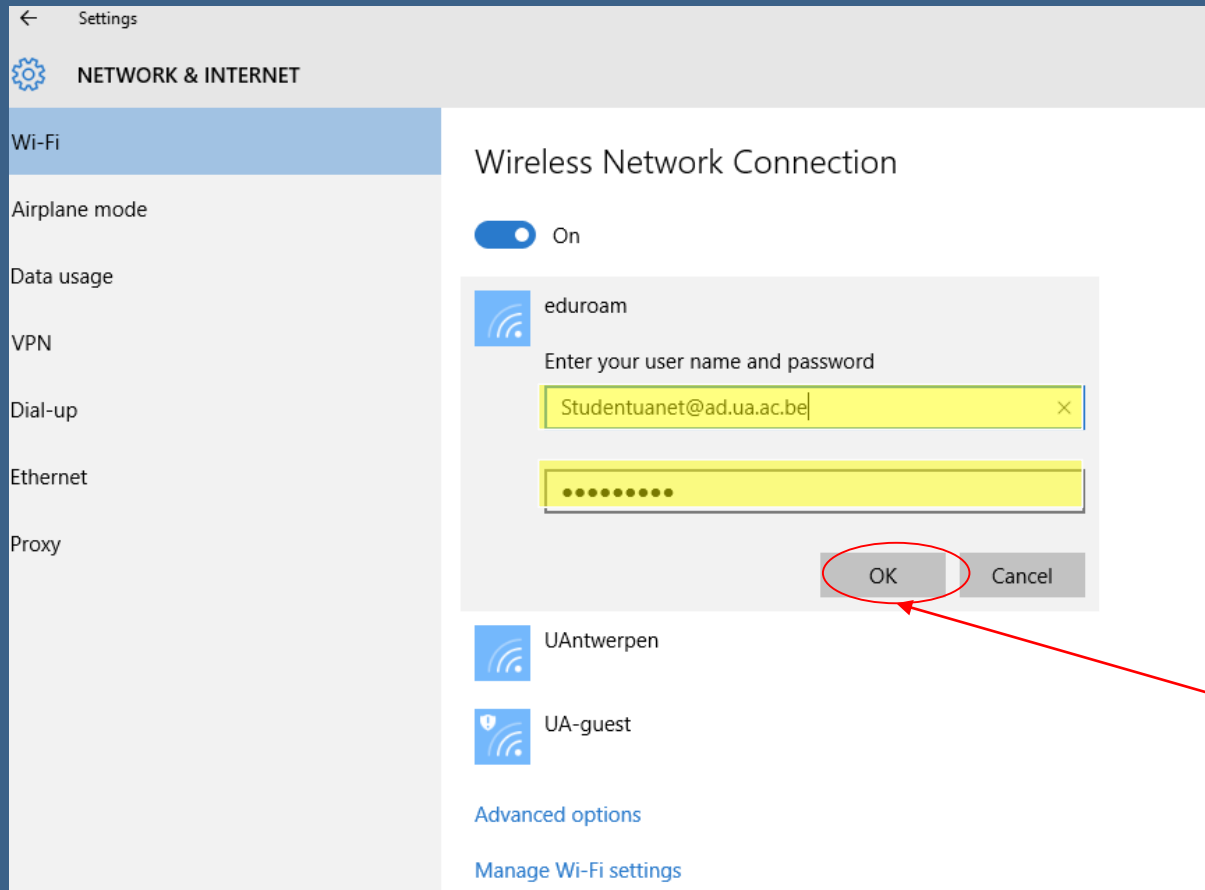
Left Click



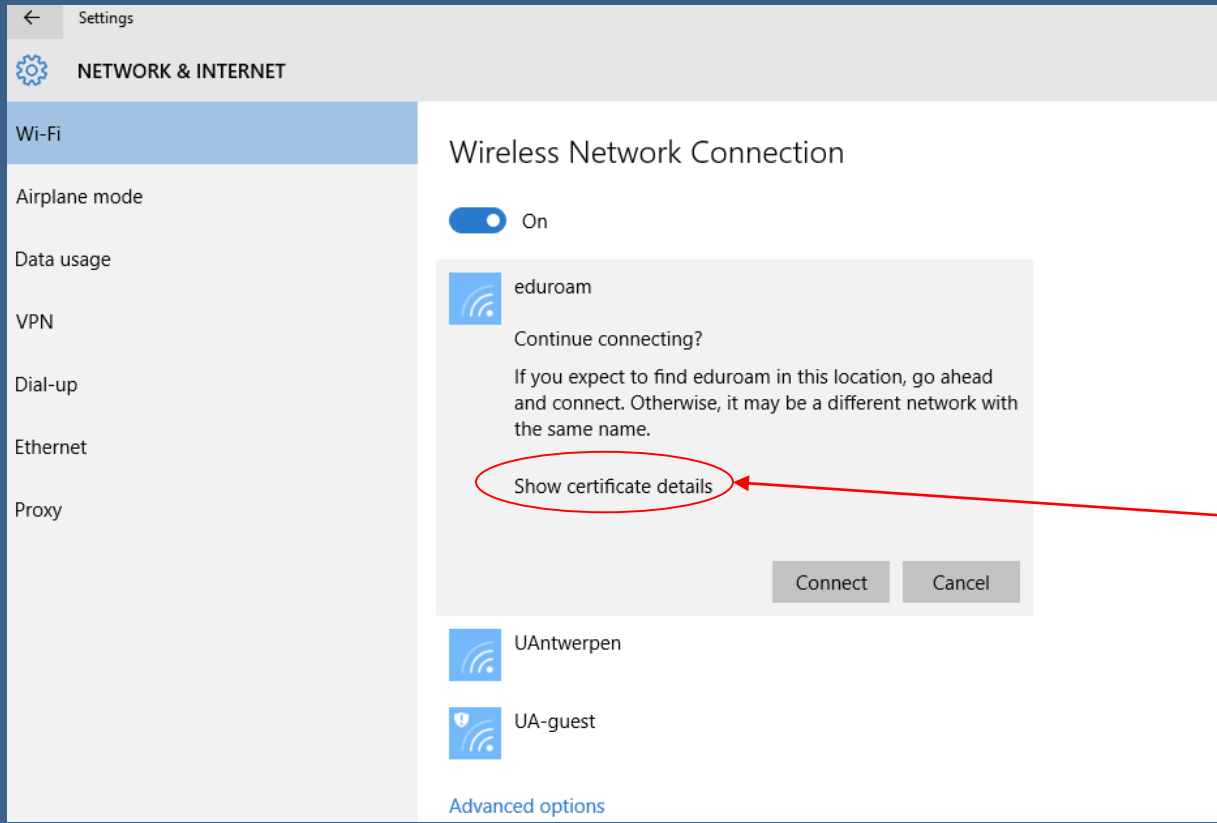


Left Click



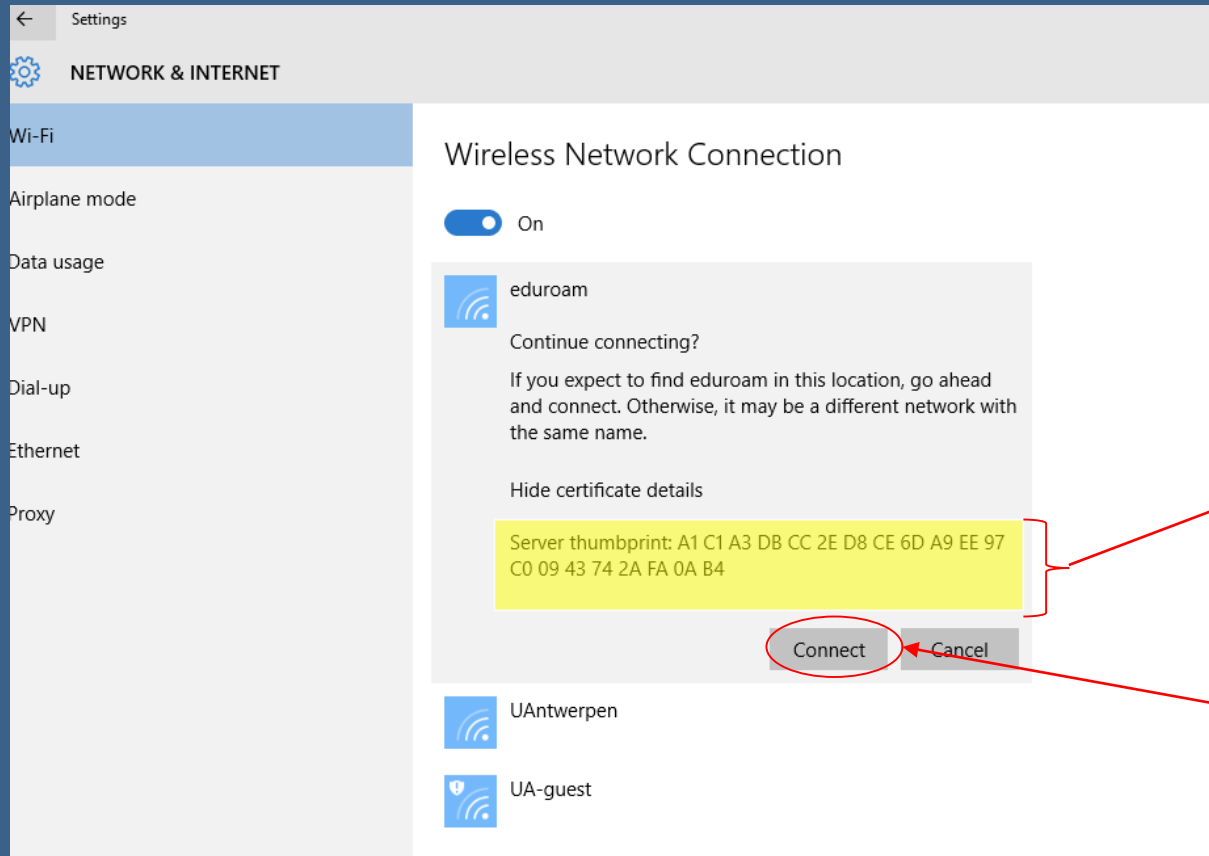


Left Click



Left Click

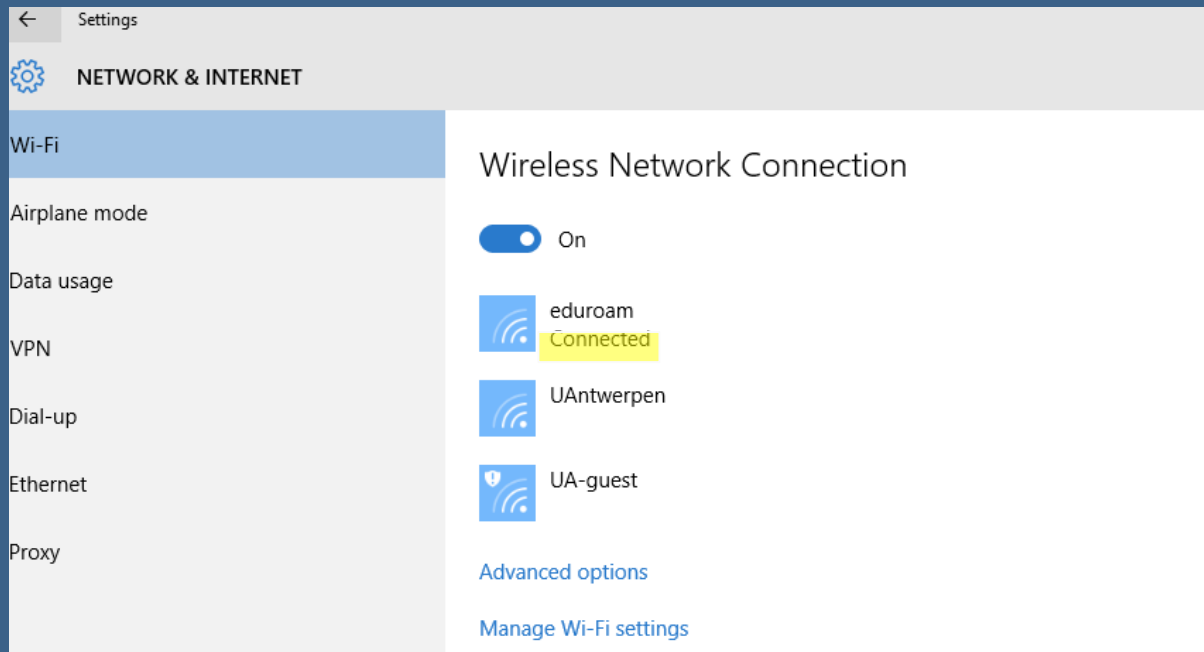




Check

Left Click





Checking connection:



Left Click

